



1. 概述

KEY TOOL MAX PRO是一款专业的多功能智能设备，设备内部集成蓝牙和WiFi通信接口，可方便灵活地连接与控制Xhorse 钥匙数控加工机系列产品。

支持汽车诊断、汽车防盗匹配、节气门匹配、胎压灯复位、保养灯归零等多种汽车匹配诊断OBD功能。



2. 主要功能



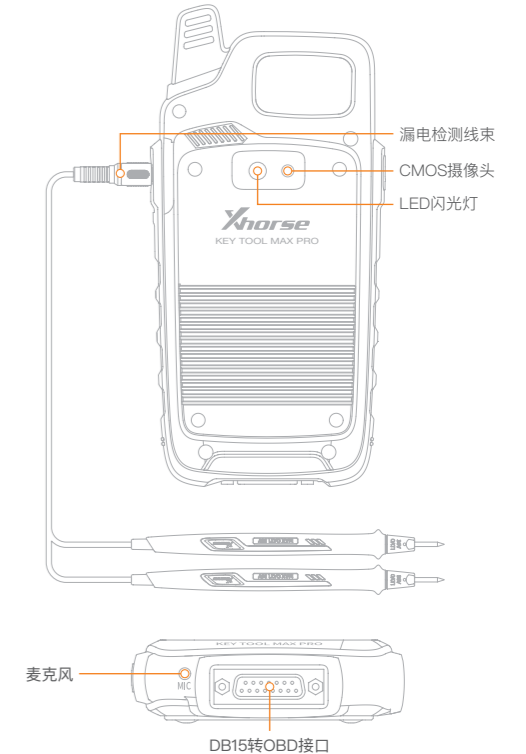
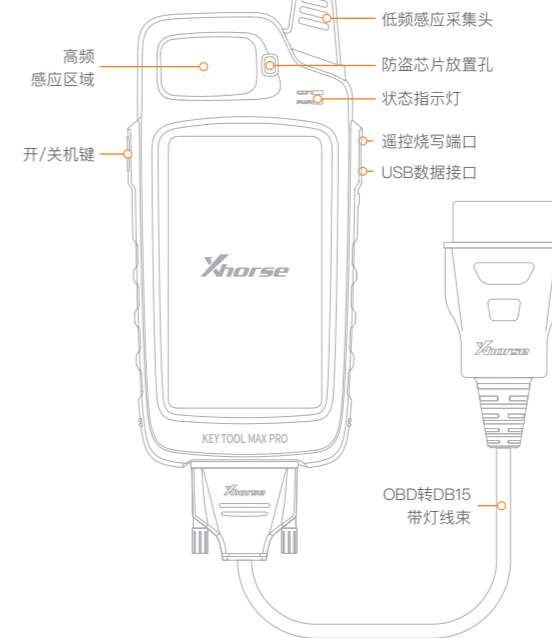
3. 性能参数



4. 装箱清单

类型	数量
MAX PRO主机	1
OBD转DB15带灯线束	1
遥控烧写线束	1
漏电检测线束	1
USB线	1
说明书	1

5. 设备外观



6. 快速设置



6.1 首次开机

首次开机时，用户须手动选择语言、地区（系统默认为中国标准时区）、连接无线网络、并采用已注册的账号信息登录，若无注册账号，请参考左图。



② 进入系统后，长按电源键，界面显示如下图标，点击关机选项，主机将关机。

6.3 连接钥匙数控加工机

KEY TOOL MAX PRO 主机可以采用蓝牙方式连接钥匙数控加工机进行工作：点击主页的【连接设备】，页面显示当前可连接的设备，根据序列号选择所用设备连接。



6.4 指示灯状态

- ① 主机开机或充电时，POW 指示灯亮。
- ② 主机工作时，CON 指示灯亮。

6.5 机器复位

- ① 长按开/关机键约12S，机器自动重启。
- ② 按住开/关机键1-2S，屏幕显示关机与重新启动选项，选择对应选项，即可关机或重新启动设备。

7. 保养维护

- 请勿猛烈撞击、震动或抛掷主机。
- 请勿用水或其它液体直接冲洗主机及部件，不可使用湿布擦拭机器。
- 请勿将主机置于高温、高湿或有大量灰尘的地方。
- 请勿私自拆卸或改装本设备，否则可能会造成主机主板损坏或电池起火等意外事故。
- 请保护好主机显示屏、摄像头等关键部件，防止尖锐的物品致其损坏。
- 漏电检测与电压检测功能仅限对遥控器子机进行漏电检测与电压检测，请勿用于其他用途的检测。所有功能请严格遵守设备使用范围使用，超范围会损坏设备。

8. 质保及售后说明

KEY TOOL MAX PRO保修期为一年，以交易凭证上的日期为准；若无交易凭证或交易凭证丢失，则以厂家记录的出厂日期为准。

※ 以下情形恕不免费保修：

- 未按说明书要求使用而造成机器故障的；
- 因自行修理或改装导致机器损坏的；
- 因跌落、碰撞或不当电压造成机器故障的；
- 因不可抗力造成机器损坏的；
- 长时间在恶劣环境中或车辆、船舶上搭载使用，造成机器故障或损坏的；因使用而导致主机外壳污旧、磨损的。

产品售后维修及技术支持，请联系经销商或扫描说明书背面二维码，下载Xhorse官方APP，咨询在线客服。

数马电子对本说明书保留所有权利。未经许可，禁止任何人与组织以任何形式对本手册的任何部分进行复制和传播。由于产品改进，本手册内容可能会发生变更，恕不另行通知。



Xhorse APP

Xhorse |

请前往苹果APP STORE或安卓各大应用市场下载使用





1. Overview

KEY TOOL MAX PRO is a professional smart device with multi-function, Bluetooth and WIFI communication interface are interlarded inside, which is convenient for connecting and controlling Xhorse Key Cutting Machine.

Supports various OBD functions such as Vehicle diagnosis, Immo programming, Throttle program, TPMS, and Maintenance light reset.



2. Main Functions

- Immo Programming
- Vehicle Maintenance
- Remote Leakage Detection
- Remote battery Voltage Detection
- Generate Remote and Smart key
- Program and Clone IMMO Transponder
- Generate Special Transponder
- Renew Remote
- Recognize and Clone Accesscard
- Generate and Clone Garage Remote
- Frequency Detection and Clone Remote
- Connect to Xhorse Key Cutting Machine

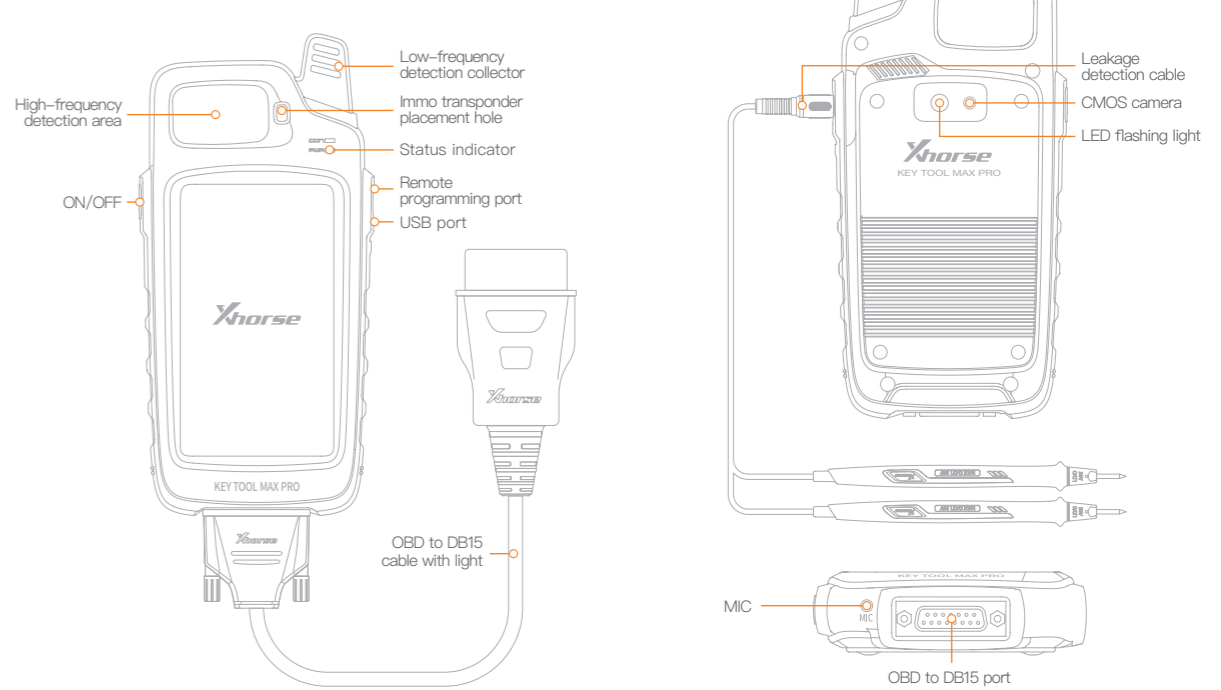
3. Performance

- Battery capacity: 3375mAh
- Battery life: >6Hours
- Stand time: >5Days
- Recharging current: 1.5A
- Brightness: >400nits
- Screen resolution: 1280*720P
- Camera resolution: 800W
- WiFi & Bluetooth: 802.11a/b/g/n/ac & 4.2 BLE

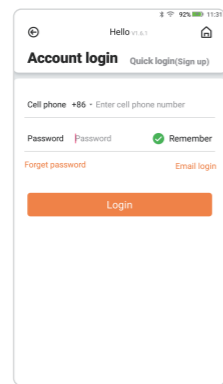
4. Packing List

Item	Quantity
KEY TOOL MAX PRO device	1
OBD to DB15 cable with light	1
Remote programming cable	1
Leakage detection cable	1
USB cable	1
User Manual	1

5. Appearance

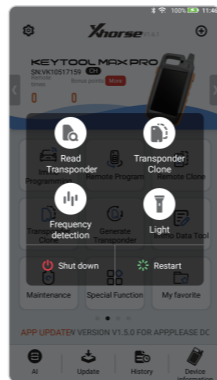


6. Setting



6.1 First Time to use

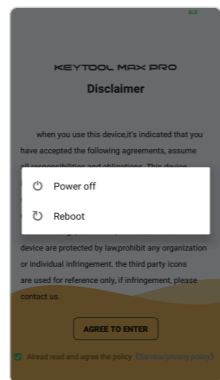
For the first time to turn on the KEY TOOL MAX PRO, you need to select language, region (System default setting is China Standard Time Zone), connect to WIFI, login with a registered account, if you don't have an account, please register as the picture on the left.



② After entering the system, press and hold the On/off button for a while, the interface displays the following icons, click to shut down Option, the device will shut down.

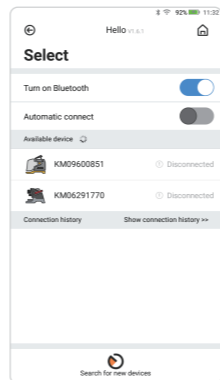
6.2 Power Off

① Before entering the system, press and hold the On/off button for a while, 'power off' and 'restart' will be shown on the screen, click on 'power off', device will shut down.



6.3 Connect to Key Cutting Machine

KEY TOOL MAX PRO can connect the Key Cutting Machine by using Bluetooth to operate: click on the interface [Select], the interface displays the current connectable device, select the device to be connected according to the serial number.



6.4 Indicator status

- ① When the device is turned on or charging, the POW indicator light is on.
- ② When the device is working, the CON indicator is on.

6.5 Device reset

- ① Press the On/Off button for 12 seconds, the device will restart automatically.
- ② Press the On/Off button about 1-2 seconds, the screen displays shutdown and restart options, select the corresponding option to shut down or restart the device.

7. Maintenance

- Do not hit it violently, shake or throw it.
- Do not wash main body and other parts with water or other liquid directly, and do not clean KEY TOOL MAX PRO with wet cloth.
- Do not place KEY TOOL MAX PRO on high temperature, high humidity or dusty places.
- Do not take KEY TOOL MAX PRO apart or retrofit it in private otherwise mainboard will be damaged or battery will on fire and etc.
- Please keep screen, camera and other key parts well and prevent sharp objects to do damage to them.
- The leakage detection and voltage detection functions are limited to the leakage detection and voltage detection of the remote, please do not use it for the detection of other products. All functions should be used strictly in accordance with the scope of use of the device, as exceeding the scope will damage the device.

8. Warranty And After-Sale Instructions

KEY TOOL MAX PRO has one year warranty, and it is based on the date on the transaction voucher; If do not have transaction voucher or lost it, the factory date recorded by the manufacturer will prevail.

※ Situations on the below can not get free repairment

- Damage caused by not following the use instructions.
- Damage caused by repairing or retrofitting in private.
- Damage caused by fall, crash or inappropriate voltage.
- Damage caused by inevitable force.
- Damage caused by using in harsh environment or on the

vehicle and ship for a long time; Get main body dirty and worn due to use.

Please get in contact with dealer or scan the QR code behind the instruction, download Xhorse official APP to get after-sale and technical support.

Xhorse reserves all rights to this manual. Without permission, it is forbidden for any individual or organization to use any form of reproduction and dissemination of any part of this manual. Due to product improvements, the contents of this manual may be changed without notice.



Xhorse APP

Xhorse |

DOWNLOADABLE FROM GOOGLE PLAY STORE AND APP STORE.

